

## CLIPS WINDOW



Clips Window Assemblies are used in controlled environments, and have been installed in many different industries, such as pharmaceutical, biotechnological, electronic, food, screen printing and many more. 'Clips' is referring to the frame which is clipped on one side of the window assembly and thus tightens the window into the wall opening. Clips windows are an airtight assembly, easily and quickly installed resulting in an aesthetic and symmetric finish.



THE ASSEMBLY IS BUILT UP OF 2 PARTS:  
THE FRAME AND THE GLAZING

### THE FRAME

Depending on the frame profile used, a REMAT Clips Window Assembly can be produced for different wall thickness'.

#### STANDARD PROFILE 40, 60 & 80MM

The powder coated profile is manufactured from extruded aluminum. This profile has on one side an additional 12mm lip which, when assembled, forms on one side the external frame and thus simplifies the installation in the partitioning.

All profiles are coated and then cut to length using a computerized saw for a perfect mitred corner joint. Hygroscopic crystals are placed in the cavity of the bottom profile, before the profiles are wedged and glued together on a calibrated surface, forming a frame with perfect angles and thus preventing internal condensation.



#### PROFILE WITH ADAPTED THICKNESS

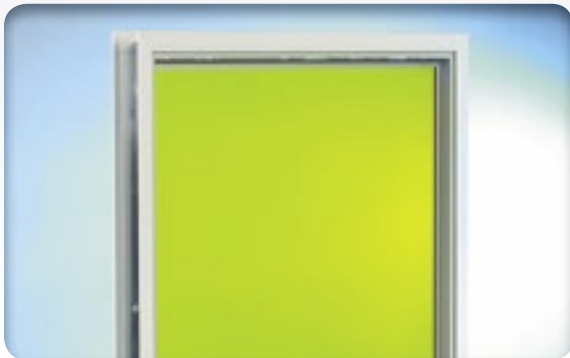
The frame comprises 2 outer aluminum profiles and a middle section with an adaptable width, this being dependant on the wall thickness in which the window assembly is to be installed. All profiles are coated and then cut to length using a computerized saw for a perfect mitred corner joint.

Hygroscopic crystals are placed in the cavity of the bottom profile, before the profiles are wedged and glued together on a calibrated surface, forming a frame with perfect angles and thus preventing internal condensation.



#### SPECIAL DESIGNED FRAME

For special projects we develop and design custom made frames which match the customers' specific needs or customized specifications.



### THE GLAZING

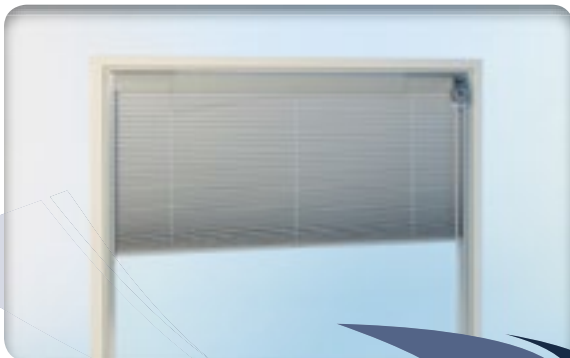
The glazing is installed on both sides of the frame.

Standard REMAT Clips Window Assemblies are provided with laminated glass.

Other types of glazing are available as an option, along with special executions such as special light sensitive films, louvers, etc.

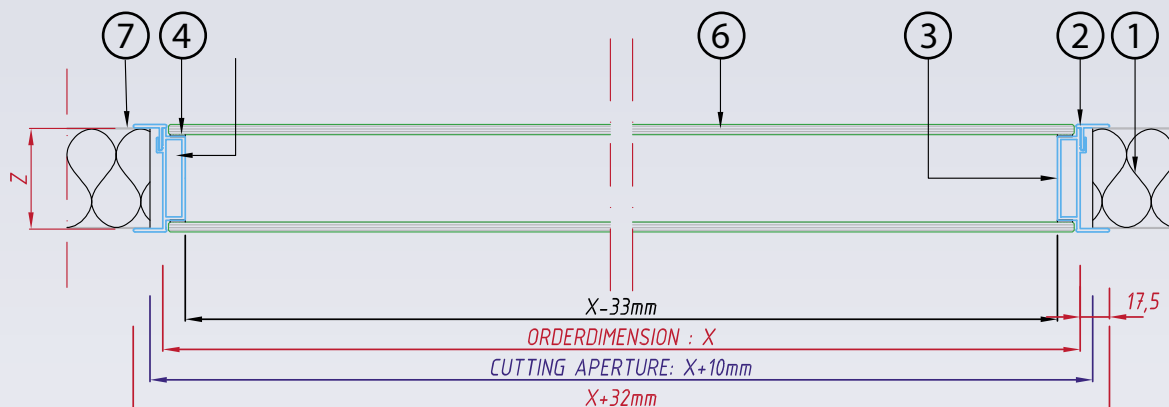
### FINAL ASSEMBLY

In order to keep the inside of the finished window assembly as dust free as possible, all operations are executed in a controlled environment, including the addition of the hygroscopic crystals in the frame.

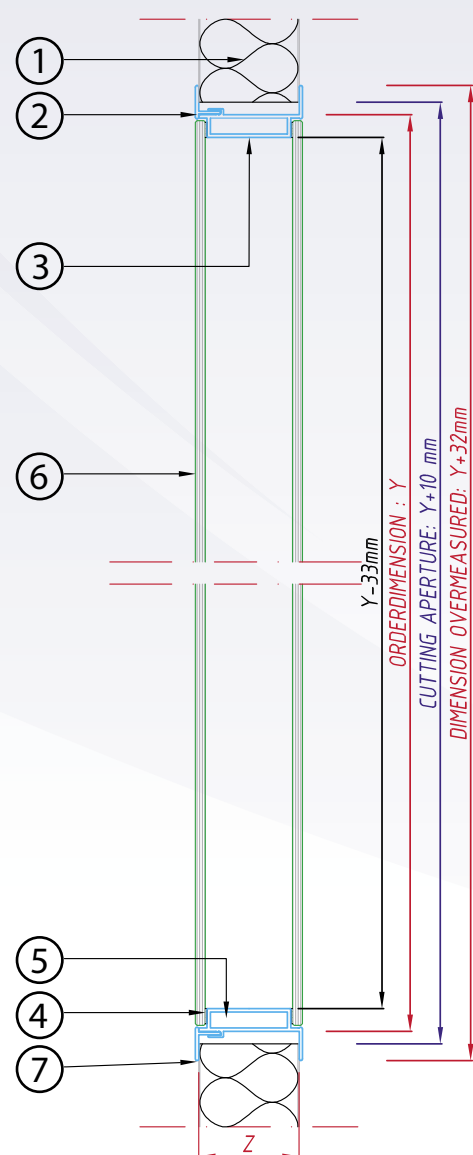


# CLIPS WINDOW FOR PARTITIONS OF 40, 60 & 80MM

## HORIZONTAL SECTION



## VERTICAL SECTION



## LEGEND

### DIMENSIONS

All dimensions are mentioned in millimetre (mm)

#### ORDER SIZES:

X: Width

Y: Height

Z: Thickness of PARTITION

#### REQUESTED CUT-OUT IN PARTITION:

X + 10 mm: Width

Y + 10 mm: Height

#### OVERALL DIMENSIONS:

X + 32 mm: Width

Y + 32 mm: Height

Z + 4 mm: Thickness

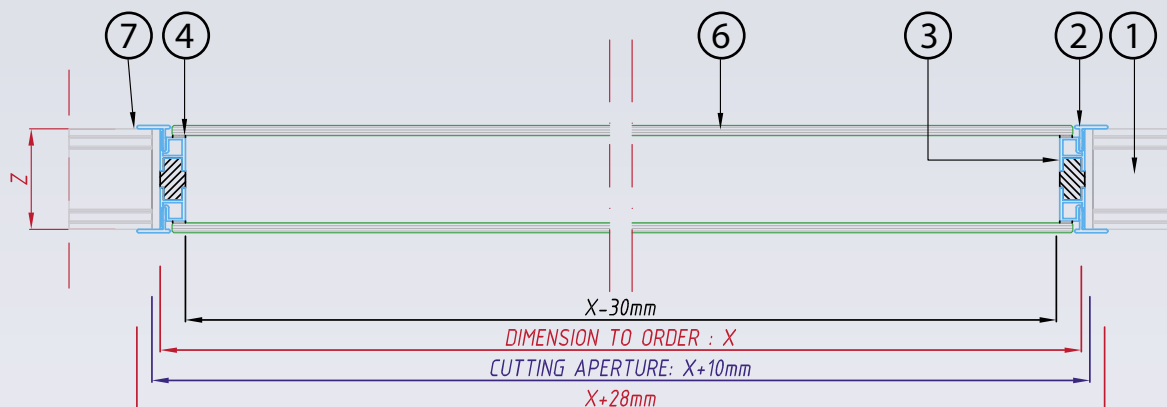
### MATERIALS

- 1 Partition
- 2 Laquered aluminium clips profile
- 3 Aluminium base profile
- 4 Doublesided tape
- 5 Hygroscopic cristals
- 6 Laminated glass
- 7 Silicone seal

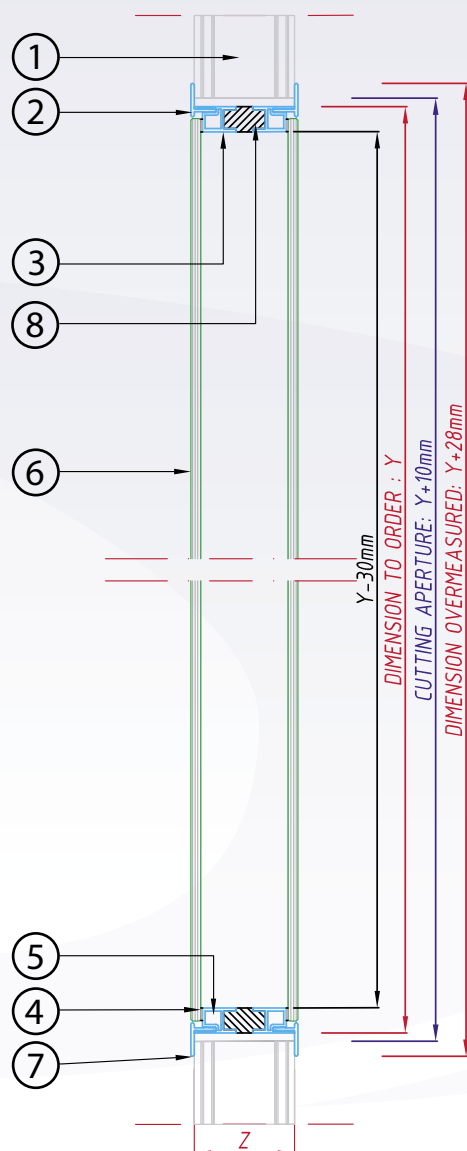
Remark: All dimensions, exept order sizes, as well as the profile can be modified without prior advice.

# CLIPS WINDOW WITH ADAPTED THICKNESS

## HORIZONTAL SECTION



## VERTICAL SECTION



## LEGEND

### DIMENSIONS

All dimensions are mentioned in millimetre (mm)

#### ORDER SIZES:

X: Width

Y: Height

Z: Thickness of partition

#### REQUESTED CUT-OUT IN PARTITION:

X + 10 mm: Width

Y + 10 mm: Height

#### OVERALL DIMENSIONS:

X + 28 mm: Width

Y + 28 mm: Height

Z + 4 mm: Thickness

### MATERIALS

1 Partition

2 Laquered aluminium clips profile

3 Aluminium base profile

4 Doublesided tape

5 Hygroscopic crystals

6 Laminated glass

7 Silicone seal

8 Intersection

Remark: All dimensions, except order sizes, as well as the profile can be modified without prior advice.